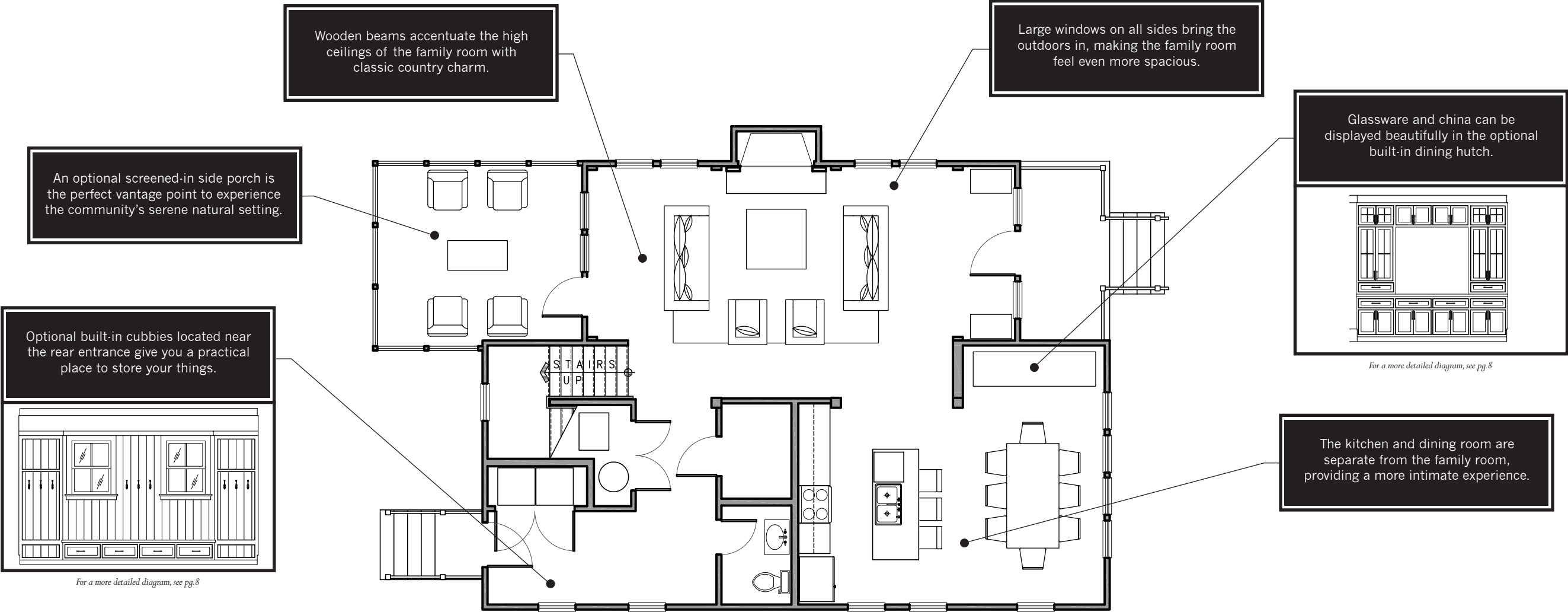


The COATES 2500

*2,584 Total Square Feet
4 Bedrooms, 2½ Bathrooms*



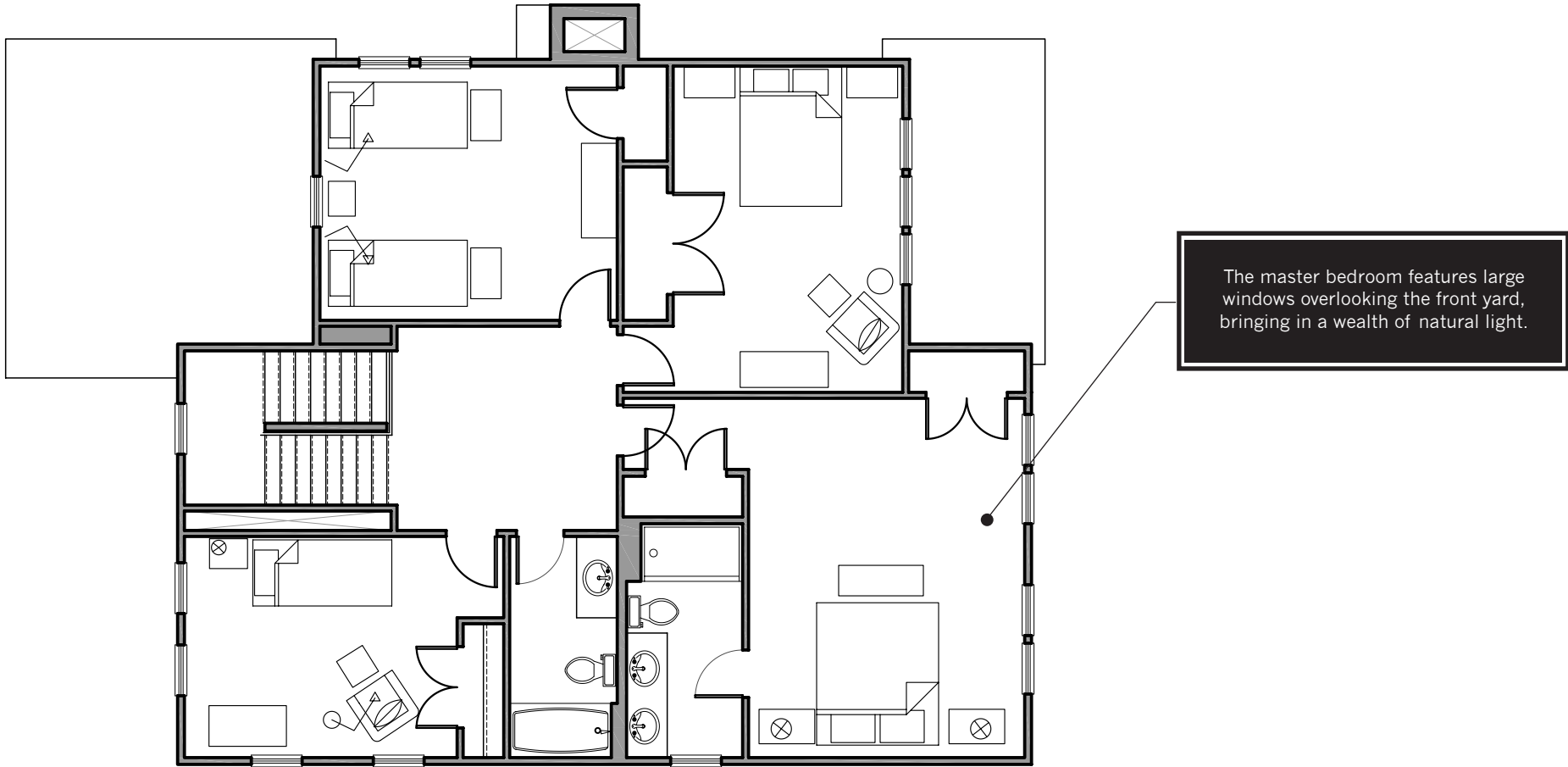
The COATES 2500



First Floor Plan – 1,294 SF

Unlike some of the other homes in The Lakeside Village of Byron, the main living areas inside the Coates are more traditional. The kitchen and dining room are joined, but the living room is separate, creating a more intimate experience. The design of this home features plenty of classic details, such as high ceilings, exposed wooden beams, and an elegant fireplace mantel. A powder room and an optional screened-in porch comprise the remainder of the amenities on the first floor of the Coates.

The COATES 2500



The master bedroom features large windows overlooking the front yard, bringing in a wealth of natural light.

Second Floor Plan – 1,290 SF

With four bedrooms upstairs the Coates is perfect for larger families, or for frequent overnight guests. And all the bedrooms receive an abundance of natural light and are laid out to maximize privacy.

The Lakeside Village of Byron

The COATES 2500



Front Elevation



Back Elevation

Exterior Elevation - Option #1

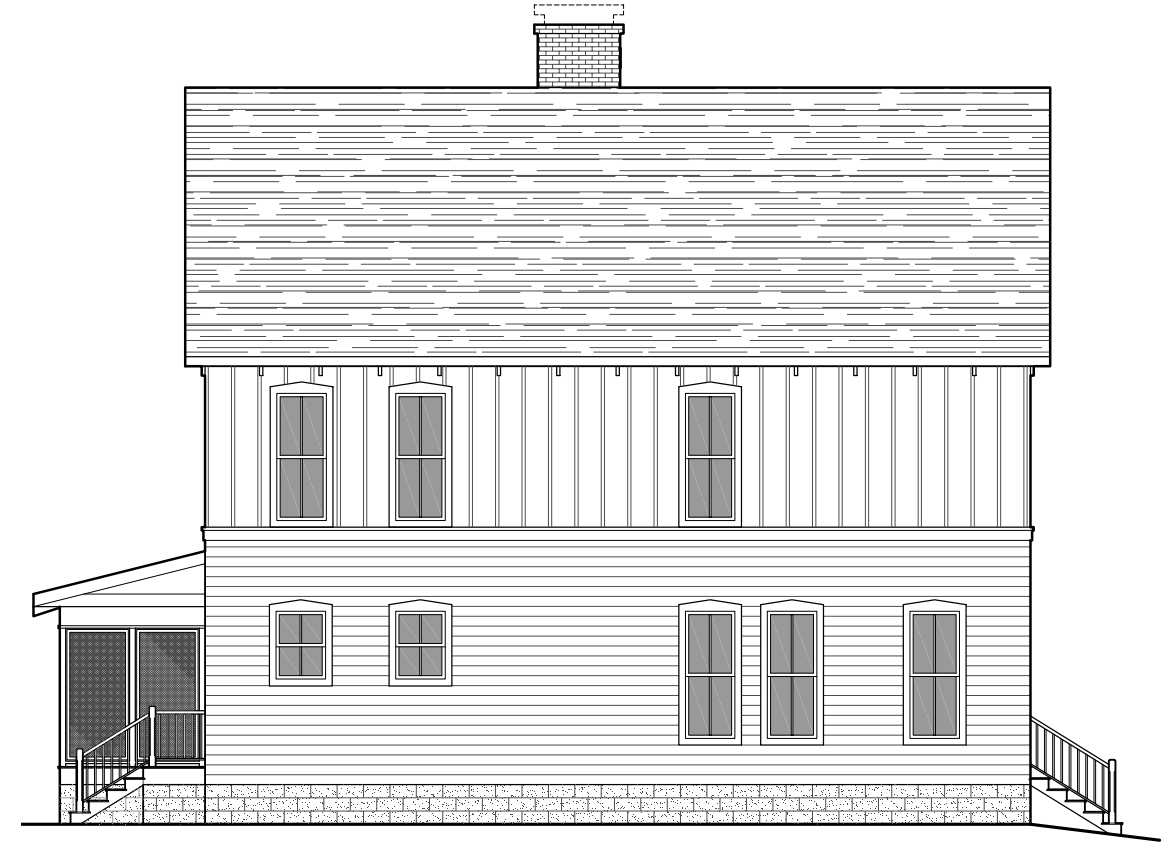
The Coates is classic, country architecture at its best. Fit for a painting or a folk song, it is the essence of mid-western Americana. Its simple design, inviting front porch, and welcoming windows take you back to an honest era when dinner was always served at five, and, much to the dismay of the fluttering moths, the porch light always went out at ten.

The Lakeside Village of Byron

The COATES 2500



Right Elevation



Left Elevation

Exterior Elevation - Option #1

The Lakeside Village of Byron

The COATES 2500



Front Elevation



Back Elevation

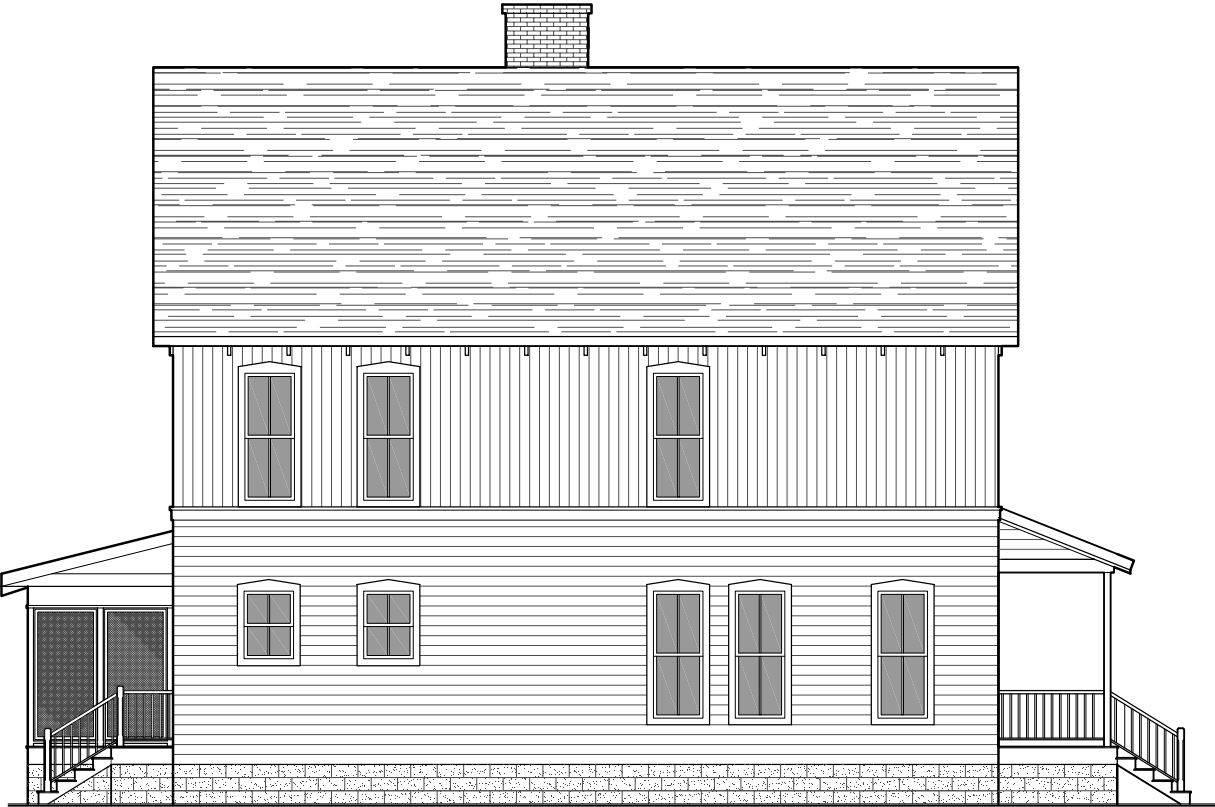
Exterior Elevation - Option #2

The Lakeside Village of Byron

The COATES 2500



Right Elevation

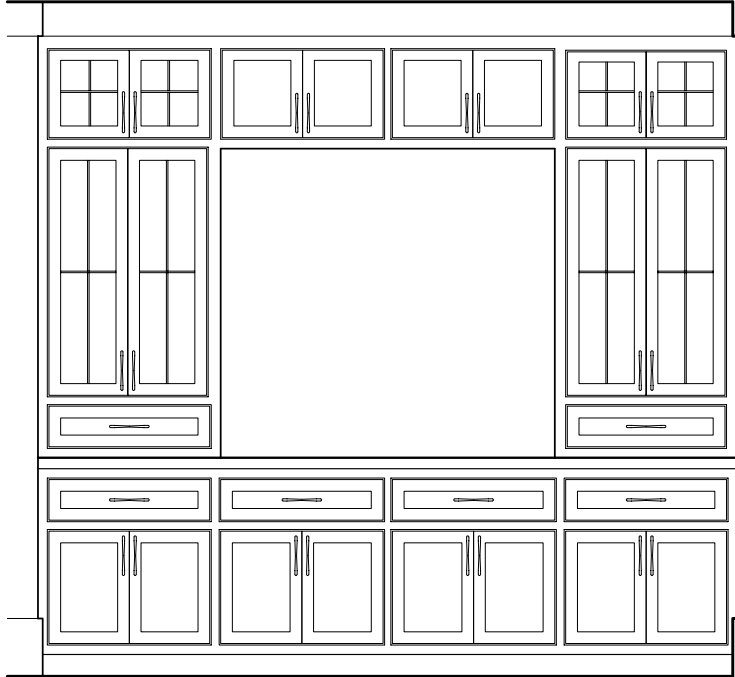


Left Elevation

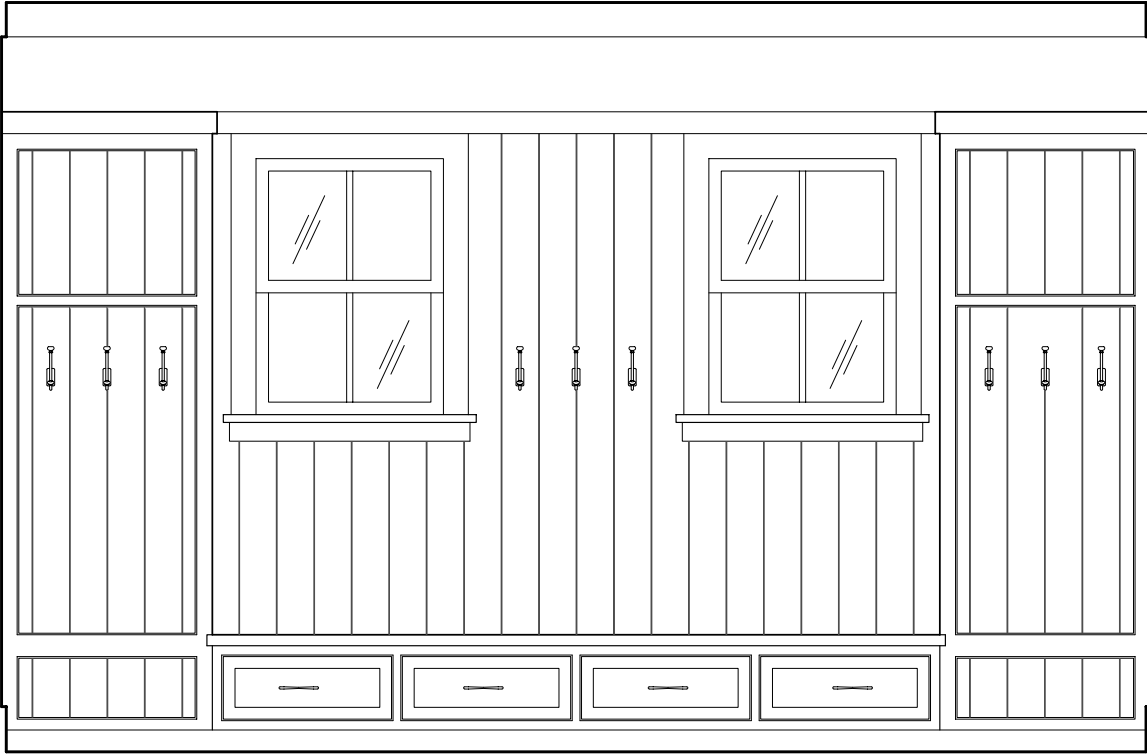
Exterior Elevation - Option #2

The Lakeside Village of Byron

The COATES 2500



Dining Hutch Built-In - Elevation



Rear Entry Built-In - Elevation

The COATES 2500



Built-In Cabinetry - Elevation

The Lakeside Village of Byron

DESIGN TEAM

Builder

Byron Extraordinary Place, LLC. – Indianapolis, IN

Architectural & Design Direction

Soucie Horner, Ltd. – Chicago, IL

Planning

David Oliver – Poundbury, England

Landscape Architecture

Catharina Malmberg – London, England



www.VillageofByron.com